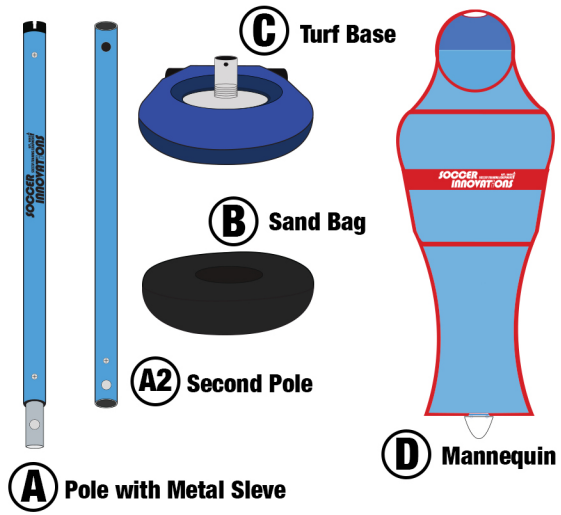




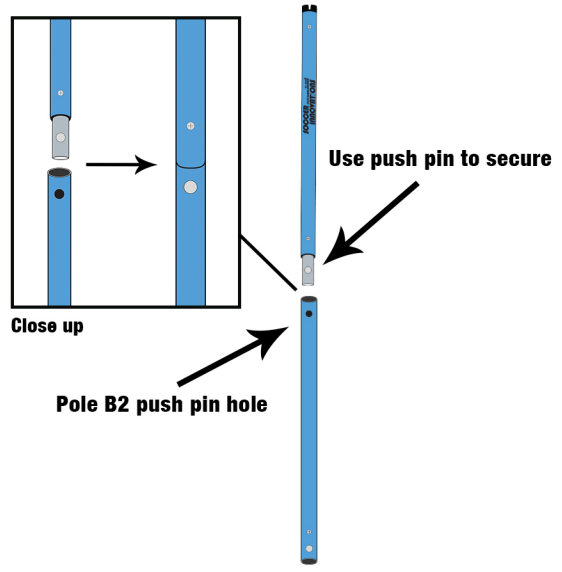
SOCCER WALL TURF
MANNEQUIN
STEP BY STEP INSTRUCTIONS

SOCCERINNOVATIONS.COM

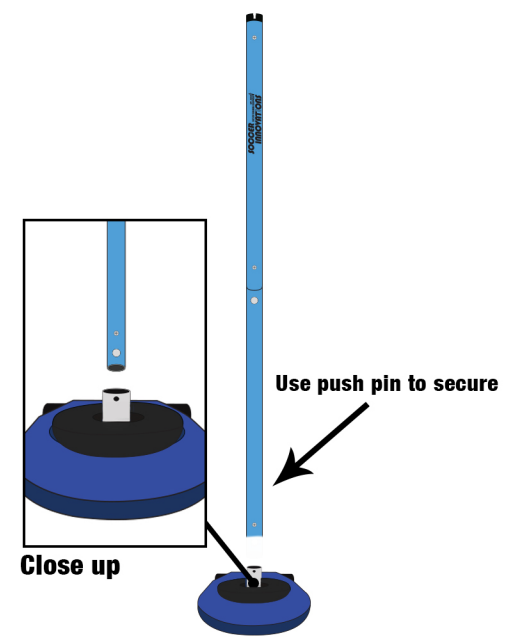
1 Use this parts and follow each step.



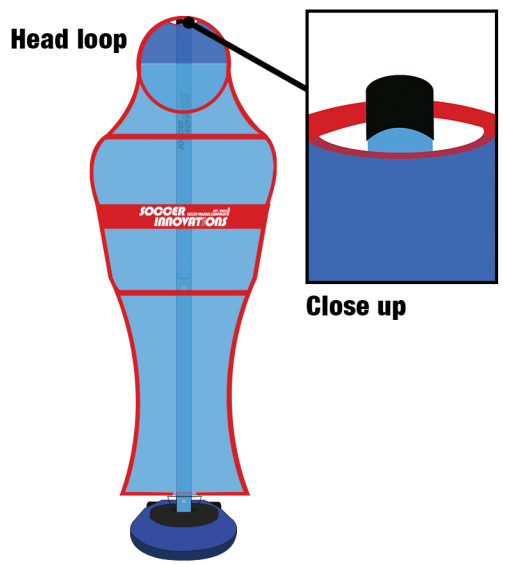
2 Connect pole A2 to pole A with metal sleeve using push pin to secure.



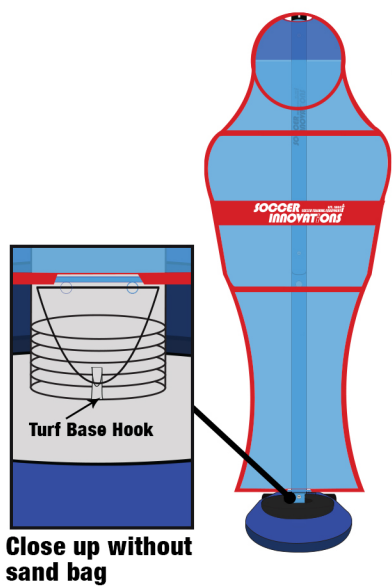
3 Place sand bag on turf base, then connect pole to turf base using push pin to secure.



4 Use head loop in mannequin and place it inside the head pole.



5 Use bottom bungee and turf base hook to secure mannequin and prevent movement.



Tip: Grab and push down bungee using both hands to attach it on turf base hook.

6 Finally attached mannequin's back velcro straps to pole.

